

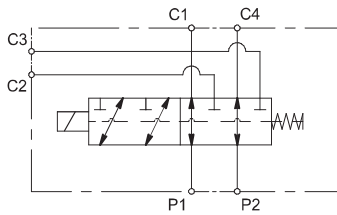
DESCRIZIONE / DESCRIPTION

Deviatore di flusso 6 vie ad azionamento elettrico, montaggio in linea
6 way flow diverter valve electrically operated, in line mounting

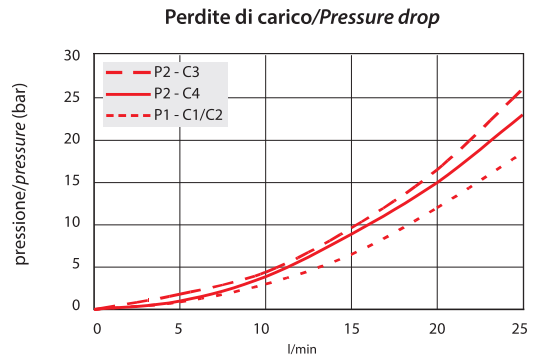
TIPO / TYPE

FD-6V

SIMBOLO / SYMBOL



PRESTAZIONI / PERFORMANCE

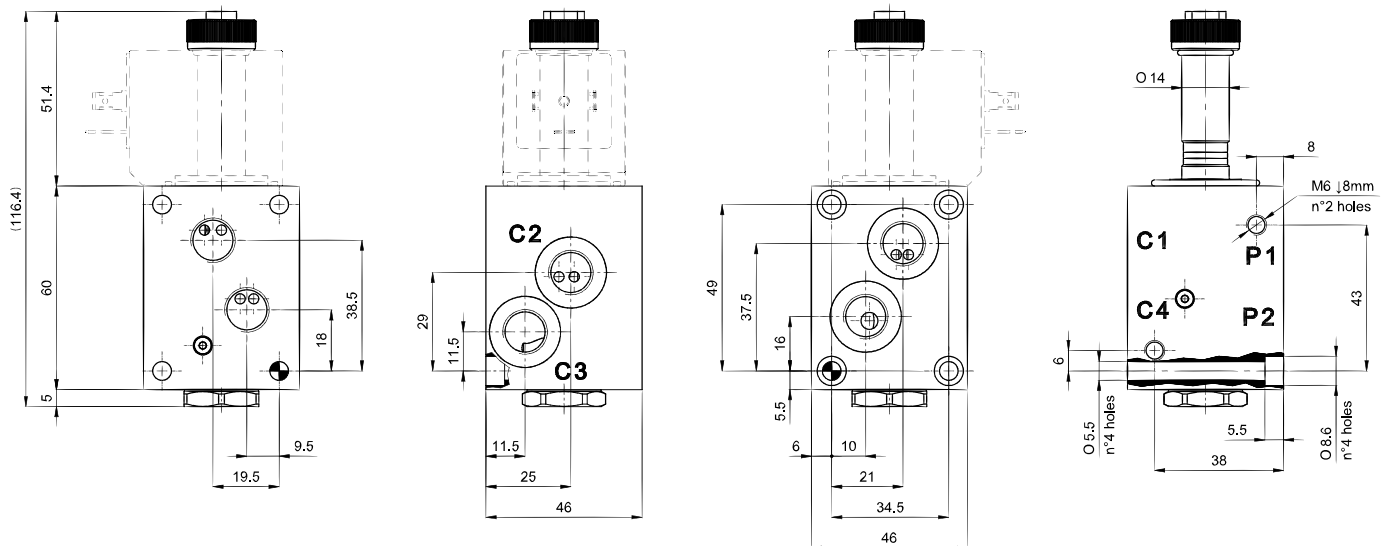


Oil idraulico minerale 32 cSt – temp. 55 °C [104 °F]
Hydraulic mineral Oil 32 cSt – temp. 55 °C [131 °F]

SPECIFICHE / SPECIFICATION

Pressione max. Max. Op. pressure	250 bar
Portata max. Max Flow	25 l/min
Bobine Coils	Cap. 6 - (size 9)

DIMENSIONI / DIMENSIONS



INFORMAZIONI PER L'ORDINE / ORDERING INFORMATION

TIPO / TYPE FD-6V 1/4 G MODELLO / MODEL